



**Business location
District of Gifhorn**

**Landkreis
Gifhorn**

INNOVATION & SERVICE



Welcome to the business location District of Gifhorn

The district of Gifhorn combines attractive living and modern working conditions, creating a high quality of life and a strong community. Our residents appreciate the natural habitat that extends across forests, lakes, moors, heathland and agricultural areas. Anyone who loves nature will get their money's worth here.

Our district offers a wide range of opportunities for entrepreneurs. The high density of engineering service providers acts as a driver for the regional economy and actively shapes the future. With attractive land potential, a well-developed infrastructure and highly qualified specialists, the district of Gifhorn offers a supportive environment for growth and innovation. In addition, the impetus from the regional universities helps to realise forward-looking projects and increase competitiveness. This location exposé provides you with an overview of the district of Gifhorn and its incorporation into the region.

Discover the opportunities that our district offers you. Our business development agency 'Landkreis Gifhorn Innovation & Service GmbH' is at your side as a competent partner to support your projects and realise your visions.

Yours sincerely

Tobias Hilmar

01 District of Gifhorn

Demography	04
Economy	05
Companies	06 – 07
Infrastructure & mobility	08 – 09
Trade	10

02 Economic development

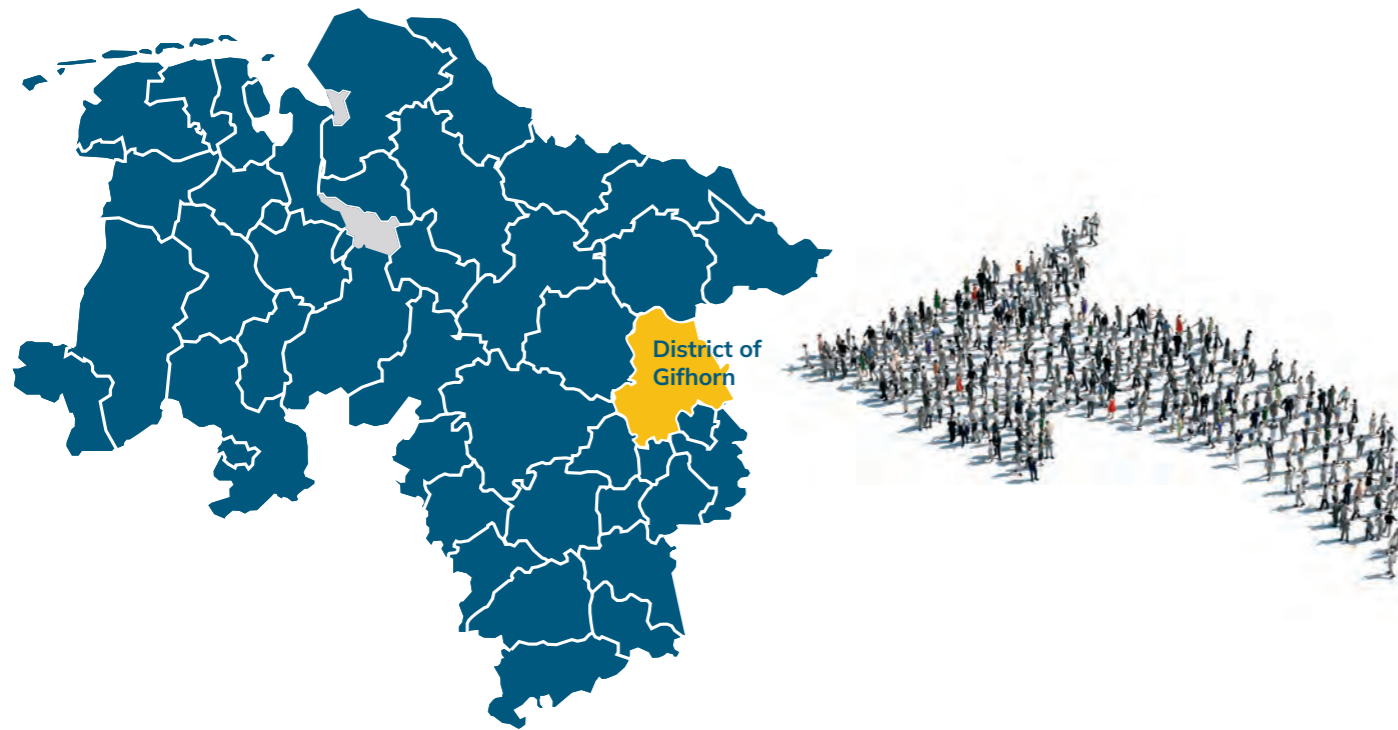
Landkreis Gifhorn - Innovation & Service / Subsidies	11
Locations / Innovation promotion	12
Start-up counselling / Company succession	13

03 Territory & Life

Territorial units	14 – 15
Events	16
Living	17

04 The economic region

Braunschweig-Wolfsburg	18 – 21
Lower Saxony	22

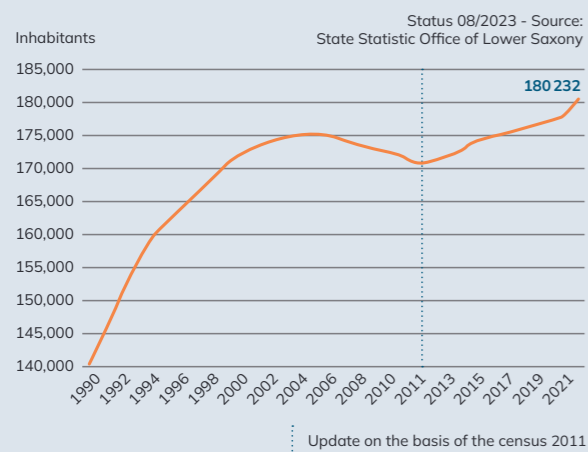


Population

180,463	1,567.6	44.1	4.5	115.1
Inhabitants (as of 30/09/2023)	Area in km ² (as of 31.12.2023)	Average age in years (as of 31.12.2022)	Unemployment rate in % (as of 2023)	Population density

Source: State Statistical Office of Lower Saxony

Population development

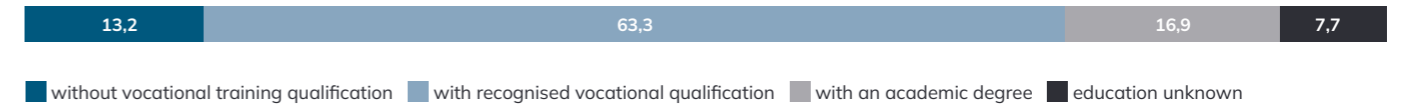


Age structure



Employment

Qualification structure, employees subject to social insurance contributions by vocational qualification in 2021 in the Gifhorn district in % (source: Federal Employment Agency 2022)

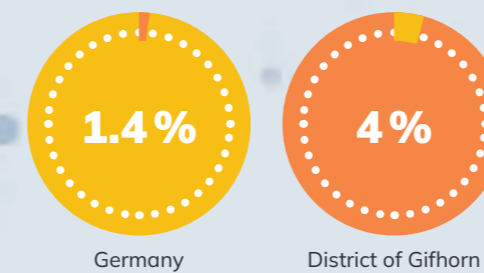


Qualification structure, employees subject to social insurance contributions by company size classes in 2021 in the Gifhorn district, shares in all employment relationships in % (source: Federal Employment Agency 2022)



ESC at the place of work in total	Share S in total ESC	Share of recognised vocational qualification in S	Share of academic vocational qualifications in S
43,954	79.7 %	79.9 %	20.1 %

ESC = Employees subject to social security contributions, S = Specialists
Source: Federal Employment Agency (October 2022)



Share of research and development personnel in the economy of all employees subject to social security contributions in 2019
(Source: ReTraSON situation analysis, 2023)

01

Core competence: Innovative engineering services

The district of Gifhorn is an important business location for technical development.

Volkswagen AG's vehicle test track in Ehra-Lessien and local companies such as IAV GmbH, Bertrandt AG, HCLTech Germany, ASAP Engineering GmbH, Schnell-ecke Group AG & Co KG and hankensbütteler kunststoffverarbeitung GmbH & Co. KG play a key role in the progress of the automotive industry.

Years of experience in the areas of vehicle development, drive technologies, innovative engineering services - as well as the production of software and hardware - make a decisive contribution to the region's technological expertise and innovative strength.

For over 40 years, **IAV GmbH** has been a leading developer of technical solutions for the automotive industry, transferring the experience it has gained with combustion engines to electromobility. IAV GmbH is also active in the energy and water industry and combines expertise with strategic consulting to support its customers in overcoming current challenges.

Bertrandt AG, also a leading engineering company, covers all production steps from design to serial production support. Simulations, prototyping and testing enable networked thinking and create synergy efficiency from a single source.

HCLTech Germany offers a wide range of technology services and products. The international company specialises in software development, digital transformation and the optimisation of IT infrastructures. 'We develop what moves tomorrow' is one of the guiding principles of **ASAP Engineering GmbH**, an independent subsidiary of global player HCLTech. Using the latest technology, the company is creating the automobility of the future.

Logistics services from transport and storage to pre-assembly, sequential production and packaging are the core business of **Schnellecke Group AG & Co KG**. The family-owned company offers extensive expertise in the logistics sector, particularly in the automotive industry but also beyond.

Another family business is **hankensbütteler kunststoffverarbeitung GmbH & Co. KG**. High-quality injection moulded parts are shaped here using modern technology. Quality, sustainability and innovation have been part of the company's policy since it was founded in 1973.

The district of Gifhorn is also home to **H. BUTTING GmbH & Co KG**. The company is known for its high-quality steel processing and is a global leader in the production of stainless steel pipes and containers.

The largest laminate producer **EGGER Kunststoffe GmbH & Co KG**, which specialises in the finishing of surfaces such as doors and floors, is also based in the district of Gifhorn. Just like **The Lorenz Bahlsen Snack-World GmbH & Co KG Germany**. A leading company in the production of snacks, which operates nationally and internationally from Gifhorn.



All of the companies mentioned are representative of the economic landscape of the district of Gifhorn - which, thanks to them, has developed into a dynamic location with traditional roots and innovative future prospects.

Employees

Lives and works nearby	13,115
Inbound commuters	31,471
Outbound commuters	61,308
total	44,586

Commuter balance -29,837

Source: State Statistical Office of Lower Saxony, 2024 (as of 30 June 2023)

Company occupancy (in %)

Public & private services	19.2
Financing, Letting, business services	32.8
Trade, catering and hotel industry, transport	28.7
Construction industry	10.6
Manufacturing industry	8.7

Source: Federal and state statistical offices (as of 2022)



Team Bertrandt

01

Traffic routes in the district

The infrastructure in the district of Gifhorn provides connections to important transport routes.

The **Enno (Wolfsburg-Hannover)** and **Erix (Braunschweig-Uelzen)** rail connections offer commuters in particular a fast and reliable way to get around.

10 bus sub-networks complement the rail service and cover the region, while the on-demand bus enables flexible journeys on demand.

The region also offers companies excellent opportunities to utilise rail for freight transport.

With a well-developed infrastructure and direct connections to important European transport hubs, rail freight transport enables fast, reliable and sustainable transport of your goods.



The **flexo on-demand bus** is an accessible bus service that can be booked online. It has no fixed departure times, but adapts flexibly to the wishes of the passengers.

In the district of Gifhorn, flexo operates in the Meinersen, Hankensbüttel, Wittingen and Wesendorf areas. This service is not only available to residents, but also to employees who need a punctual and reliable connection to their workplace. This way you can get to work comfortably and without stress.

As the flexo only runs when it is called, it makes a real contribution to climate protection and is an intelligent solution for mobility in rural areas.

Information at: flexo-bus.de

District of Gifhorn

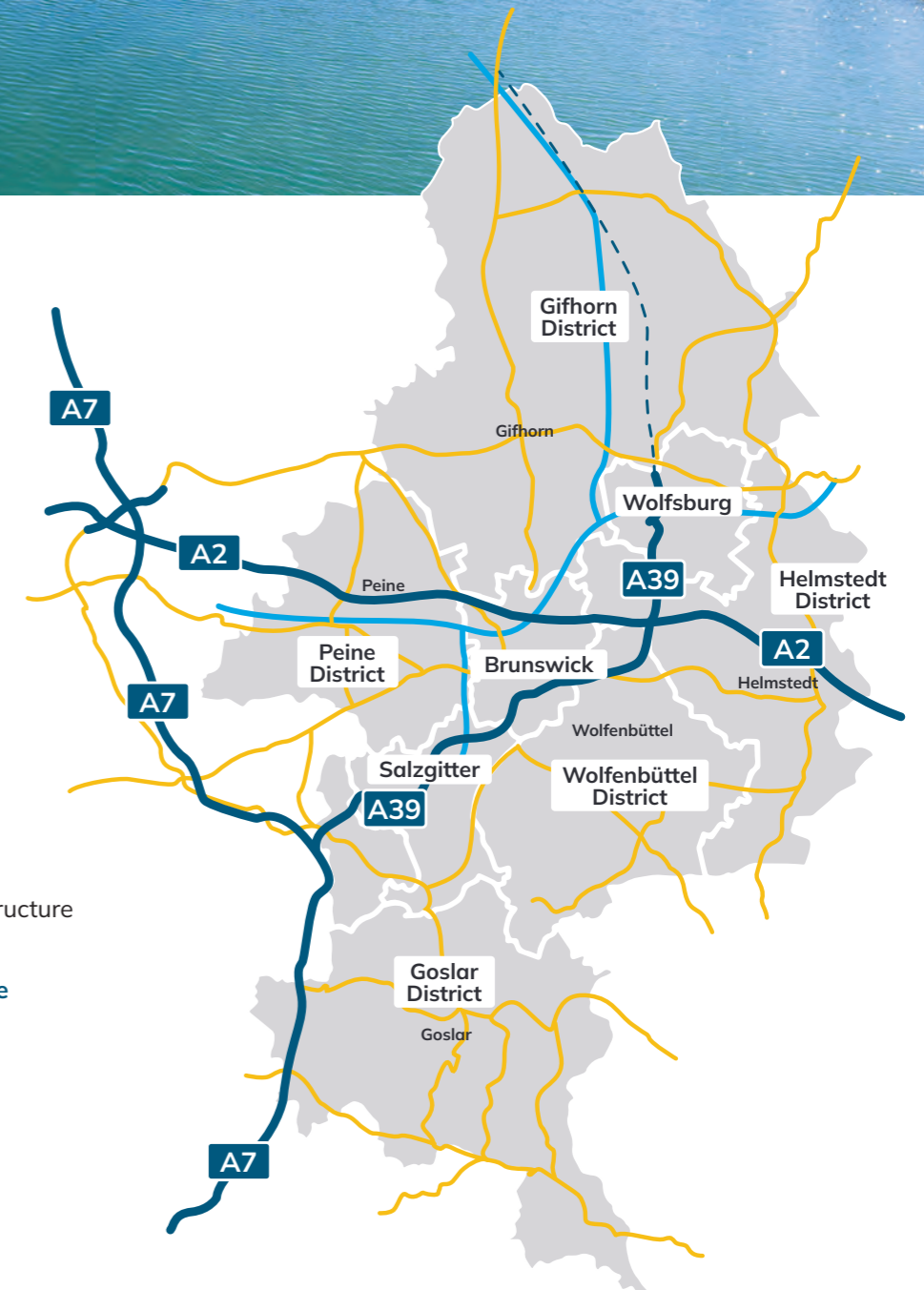
Municipal road	814 km
County road	420 km
Main road	183 km
Country road	180 km
Motorway	7 km

(as of 2024)



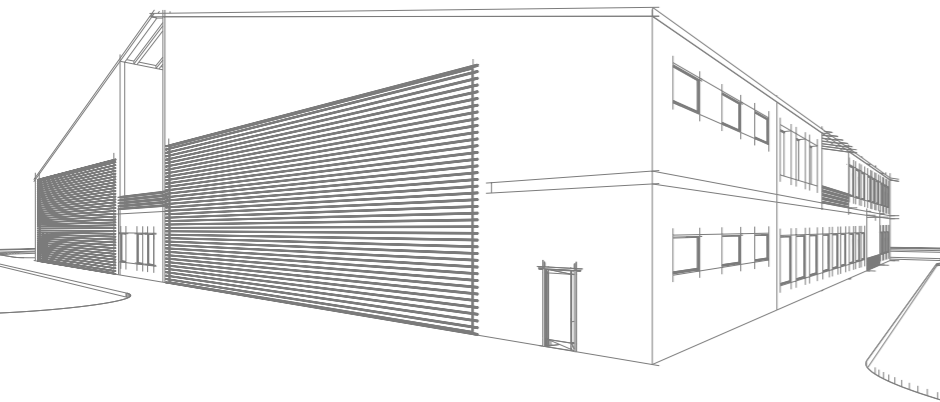
More information about the infrastructure and mobility in the region at:

regionalverband-braunschweig.de



Industrial areas

Whether production area, logistics site or office building:
The district of Gifhorn has a large number of fully developed industrial areas with different designations.



Triangel Industrial Park

The former production plant of an automotive supplier now offers short and long-term production, storage and office space for rent. The site covers approx. 360,000 m², of which 61,500 m² are built-over.

Information at: industriepark-triangel.de

Commercial and industrial area 'Wittingen Harbour'

The 'Wittingen harbour' commercial and industrial area boasts an impressive trimodal infrastructure: it is located at the Elbe-Seitenkanal, is easily accessible via the B 244 main road and has a rail connection. The planned construction of the A 39 motorway will further improve the connection. The area also offers potential for expansion areas and therefore ideal conditions for companies with major expansion plans.



Hammerstein Park in Wesendorf

The former barracks site now offers companies an attractive environment for trade and logistics. The site includes modern office and storage space as well as traffic training areas. In addition, there is a mobile home site and various leisure facilities.

Information at: hammerstein-park.de

Your success is our goal

Landkreis Gifhorn Innovation & Service GmbH is at your side as a reliable partner.

We advise you on questions regarding subsidies and commercial premises and help you to find suitable co-operation partners. Our aim is to offer you the best possible conditions for your business success.

Our range of services is aimed at companies of all sizes and sectors in the Gifhorn district.

Information at: wirtschaftsforderung-gifhorn.de

Subsidies

In a dynamic business world, subsidies can be crucial in driving your projects forward or initiating growth.

We will be happy to advise you in your search for a suitable funding opportunity and support you in the application process.



More than 200 companies from the Gifhorn district have already joined the **Wirtschaftsvereinigung Gifhorn e.V. (WVGF)**. Regular events enable the members to engage in dialogue with each other. This cross-industry exchange creates synergies and strengthens the foundation for a strong local economy.

Information at: wv-gifhorn.de

Landkreis Gifhorn

INNOVATION & SERVICE

We want to make it easier for you to access financial support so that your entrepreneurial visions can become reality.

Visit our website and get an initial overview of current funding opportunities.

NBank

NBank offers subsidies, financing and advice for private individuals, companies and public institutions in Lower Saxony: grants and loans for start-ups, business development, innovation projects and housing subsidies as well as support for social and regional projects.

Information at: nbank.de

SME subsidies in the Gifhorn district

In cooperation with all of the district's regional units, the district of Gifhorn has issued a funding guideline for the financial support of SMEs. The aim of the guideline is to create and safeguard jobs. If your project is eligible for funding, you can receive an investment grant of **up to 15% of your investment sum - up to a maximum of € 75,000.**

Subsidies for doctors in the Gifhorn district

for a sustainable and modern healthcare location

Doctors and psychotherapists who settle in the Gifhorn district for the first time, take over a practice or set up a second practice can receive funding if they counteract an (imminent) lack of care.

Landkreis Gifhorn

INNOVATION & SERVICE

Location solutions

Whether you need a new location for your business, want to expand existing space or restructure - we are at your side.

We can help you find the right commercial space that meets your specific requirements.

We endeavour to offer you an ideal location solution that not only meets your business requirements, but also contributes to your company's success.

There are numerous industrial areas in the Gifhorn district that offer companies space to settle and develop. We will be happy to inform you about available sites, related business sectors or possible cooperation partners in the region.

Innovation promotion

Your key to success

Curiosity and enthusiasm for future topics are the requirements for technical and social innovation.

Our 'Innovation Promotion' business service supports you in the development and implementation of your projects. We inform you about current innovation trends and help you find cooperation partners so that you can successfully realise your ideas.



Simple, fast, clear:

On komsis, entrepreneurs and investors can discover attractive commercial sites, factories, workshops, warehouses, retail properties, offices and practices and obtain direct information on the infrastructure, population and economic strength of the commercial location.

Information at: komsis.de



Digital innovation network innomatch

'Just do it' is the motto with which the state of Lower Saxony motivates and supports prospective and existing entrepreneurs. Via the 'innomatch' platform, companies, investors and research organisations introduce themselves and their project ideas, find each other easily and are supported in becoming active together.

Information at: innomatch.nds.de

Landkreis Gifhorn

INNOVATION & SERVICE

Start-up counselling

Your guide to a successful start.

From the initial idea to the creation of a business plan - together with our regional partners, we will guide you step by step through the start-up process. We want to make your entry into self-employment as smooth and successful as possible.

Landkreis Gifhorn Innovation & Service GmbH is your local expert advice centre.



Company succession

Important: Deal with the planning in time.

Business owners who are interested in a company succession should start planning at an early stage to ensure a smooth transition that takes both business and personal interests into account.

The **IHK start-up information package** contains important information on various start-up aspects so that you can optimise your planning and calculations specifically. A well thought-out concept forms the foundation of your company and makes opportunities, risks and possible room for manoeuvre visible.

Information at: ihk.de

The **Gründer Plattform** is an interactive platform that guides you digitally through the entire start-up process.

Information at: gruenderplattform.de



The 'Regionalpool Unternehmensnachfolge' is a free service for transferring companies and those interested in succession.

Professional external support is provided during the merger and transition phase.

Information at: allianz-fuer-die-region.de/wirtschaft

City of Gifhorn

The city of Gifhorn - which gives the district its name - is the administrative centre of the district and of the district court of Gifhorn.

The town of Gifhorn offers companies an attractive environment that combines history and tradition with modern locational advantages.

As the supply centre of the southern part of the district, Gifhorn plays a central role in the region and offers an excellent infrastructure for trade and services.

The well-preserved cityscape around the impressive Gifhorn Castle creates a special ambience that impresses employees and business partners alike. The central pedestrian zone with numerous owner-managed specialist shops, inviting lounge areas and local recreational opportunities along the Aller river make Gifhorn an ideal location that combines quality of work and quality of life. Companies not only find a unique atmosphere here, but also a strong attraction for skilled labour and business contacts.



WiSta is your contact for **business development and city marketing** in the city of Gifhorn, including the towns of Gamsen, Kästorf, Wilsche, Neubokel and Winkel.

Information at: wista-gifhorn.de



The **City-Gemeinschaft Gifhorn e.V.** unites the interests of local retailers in the city of Gifhorn. By organising city centre events and the joint Gifhorn voucher, the CGG revitalises the pedestrian zone and thus sustainably strengthens the stationary retail trade. A clear advantage for customers and local retailers.

Information at: gifhorn-city.de



The district of Gifhorn is divided into **10 territorial units (7 joint municipalities, 1 single municipality and 2 cities)**, each of which has its own strengths and special features. However, a high quality of life and an active community life can be found throughout the district. From life in the village to a medium-sized town - in the district of Gifhorn you have the choice.



City of Wittingen

Excellent opportunities for the future thanks to its trimodal infrastructure with connections to road, rail and waterways.

Wittingen was not only a border town in the Middle Ages, but was also conveniently located on the border to the Altmark. The town was therefore a trading centre and rest stop for east-west trade.

As a supply centre for the northern part of the district, the city is ideally positioned to meet the requirements of modern logistics and fast flows of goods.

In addition to this strategic location, Wittingen uniquely combines industrial potential with rural charm and a historic city centre. The attractive city centre with its owner-managed specialist shops and inviting cafés also creates a pleasant environment that invites you to linger. Wittingen quite rightly describes itself as a **'feel-good town for all generations'**.

HGV Wittingen e.V.

The Handels-, Gewerbe- und Verkehrsverein Wittingen e.V. has been in existence since 2003. The aims of the association are the exchange of experiences among its members and joint events such as summer festivals, open Sundays or candlelight shopping. In this way, the HGV Wittingen creates inviting shopping experiences and strengthens the local economy.

Information at: hgv-wittingen.de



City of Gifhorn:
44,634 Inhabitants,
104.9 km², 13 Mills,
1 Castle, 2 Train stations



City of Wittingen:
11,573 Inhabitants,
225.1 km², 25 Localities,
1 Harbour,
1 Train station

Business trips & events

From accommodation and conference rooms to leisure activities after work.

Tourismusinformation Südheide Gifhorn GmbH will help you organise your stay: It will advise you on finding suitable accommodation, give you tips on planning activities, arrange cultural and countryside tours or show you possible cycling and hiking tours through the idyllic countryside in the Gifhorn district.



Manor & Eventlocation farm Inn – farminn.de



Morada – Restaurant & Hotel gifhorn.morada.de



Südheide Gifhorn GmbH
 Marktplatz 1
 38518 Gifhorn
 T. +49 05371 937880
info@suedheide-gifhorn.de

Opening hours
 Mon - Thu 9.00 - 17.00
 Friday 9.00 - 15.00
 Saturday 9.30 - 13.00

Touristinformation Wittingen
 Lange Straße 29
 29378 Wittingen
 T. +49 5831 9934900
urlaub@suedheide-gifhorn.de

Opening hours
 Mon - Thu 9.00 - 13.00
 + 13.30 - 17.00
 Friday 9.00 - 15.00
 Saturday 9.30 - 13.00

Information at:
suedheide-gifhorn.de



International Mill Museum Gifhorn

The International Mill Museum in Gifhorn offers a lively history of mill culture and traditional milling, a wide range of events and culinary delights, mainly from the Südheide region, in a unique setting.

Information at: muehlen-museum-gifhorn.de



Living & Life

From harmonious detached houses in quiet village areas to modern flats in the town centres.

In the Gifhorn district, everyone will find a home to suit them. Nature lovers can opt for charming country houses in the Südheide, while families appreciate the well-developed new-build residential areas.

For professionals who appreciate the proximity to Wolfsburg or Braunschweig, the district of Gifhorn offers attractive residential areas that harmoniously combine urban connections and rural idyll. Here you will find a home that offers you the advantages of a peaceful environment with recreational opportunities close to nature, without having to forego proximity to the professional opportunities and urban amenities of the cities.

In addition to the economic advantages, the Gifhorn district offers an impressive quality of life.

It is rich in nature and offers numerous leisure activities for families, adventurers, sports enthusiasts and those seeking relaxation: e.g. water skiing, karting, archery, golfing, sailing, hiking or visits to the adventure playground.



In 2023, 10.863 ha of land was legally designated for residential development (WA) (District survey).

The many clubs, where community and culture are lived, play a major role in the offered leisure activities.

Volunteering is crucial for harmonious coexistence in our society.

Volunteering plays an indispensable role in rural areas in particular and makes a valuable contribution to a wide range of cultural offerings.

In the Gifhorn district, civic commitment is a living anchor of its vibrant democracy and contributes significantly to social cohesion.

1,800 clubs and 1,368 gold volunteer cards confirm this!



The economic region Braunschweig-Wolfsburg

Community and cohesion

Tradition and high-tech are combined here in a unique way. A region that offers both professional excellence and pure quality of life.

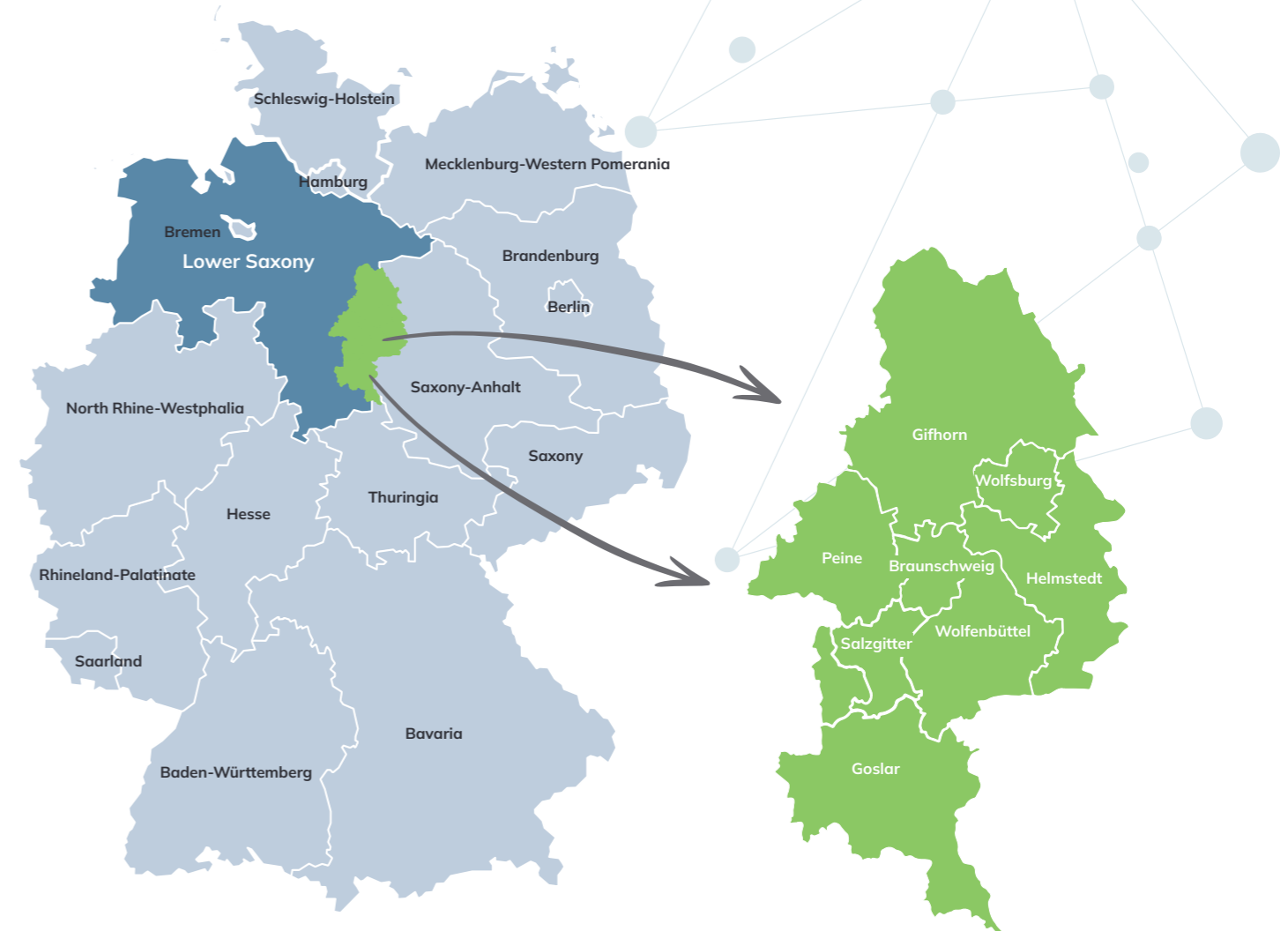


Goslar, a historic centre of mining, has developed into a leading area in the field of recycling. Valuable special metals that are indispensable in smartphones, computers and tablets are reprocessed here. The district recognised the potential of e-waste at an early stage and now offers exciting career opportunities for specialists in metallurgy, chemistry and recycling.

Salzgitter and **Peine** are important locations for the metal and steel industry. In Salzgitter, five global players and numerous medium-sized companies ensure a strong economy that offers countless training and career opportunities.

Wolfenbüttel impresses with its unique historical half-timbered backdrop and **Helmstedt** is transforming itself from a former lignite mining region into a high-tech location for digital industries.

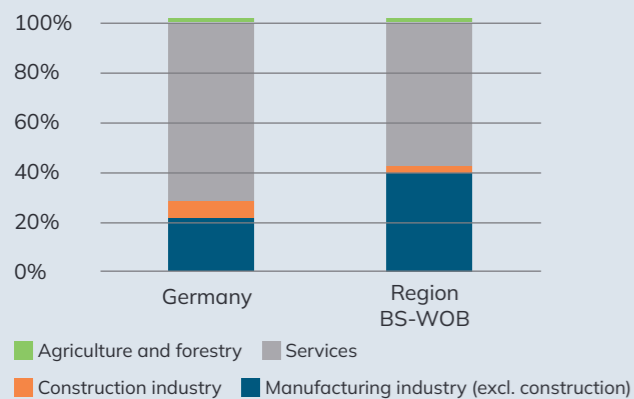
Wolfsburg, with the Volkswagen Group, is a key player in the automotive market, and **Gifhorn** is home to numerous engineering service providers who are pioneering the future with inventiveness and foresight.



Dynamic locations

The close networking of science, business and society as well as the strong cohesion in the region create ideal conditions for dynamic locations and innovative solutions for future topics.

Gross value added by economic sector 2020
(source: ReTraSO 2023 situation analysis)

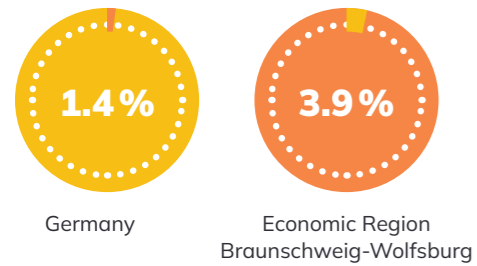


Education. Research. Innovation.

Universities, colleges and institutes

Braunschweig, Goslar, Salzgitter, Wolfenbüttel and Wolfsburg are home to numerous universities, colleges and institutes. This creates a vibrant landscape for education, research and innovation.

Braunschweig, the second largest city in Lower Saxony, has become the centre of Europe's most research-intensive region thanks to its high density of research institutions. More scientists work here than anywhere else in Germany, giving the region a decisive competitive advantage.



Share of research and development staff in economy in all employees subject to social insurance contributions in 2019 (source: ReTraSON situation analysis, 2023)

- Universities and colleges
- Non-university research institutions and federal research institutions



City of Braunschweig

- Technische Universität Braunschweig
- Hochschule für Bildende Künste Braunschweig
- Deutsches Zentrum für Luft- und Raumfahrt e.V.
- Helmholtz-Zentrum für Infektionsforschung GmbH
- Friedrich-Loeffler-Institut Bundesforschungsinstitut für Kulturpflanzen (JK)
- Georg-Eckert-Institut – Leibniz-Institut für Internationale Schulbuchforschung
- Leibniz-Institut DSMZ – Deutsch Sammlung von Mikroorganismen und Zellkulturen GmbH
- Johann Heinrich von Thünen-Institut, Bundesforschungsinstitut für ländliche Räume, Wald und Fischerei
- Deutsche Wetterdienst (DWD)
- Braunschweigische Wissenschaftliche Gesellschaft (BWG)
- Physikalisch-Technische Bundesanstalt (PTB)
- Fraunhofer-Institut für Holzforschung – Wilhelm-Klauditz-Institut (WKI)
- Fraunhofer-Institut für Schicht- und Oberflächentechnik (IST)
- Fraunhofer-Institut für Toxikologie und Experimentelle Medizin (ITEM)
- Fraunhofer-Projektzentrum für Energiespeicher und Systeme ZESS
- Fraunhofer-Institut für Fertigungstechnik und Angewandte Materialforschung (IFAM)

City of Wolfsburg

- Ostfalia Hochschule für angewandte Wissenschaften, Campus Wolfsburg
- Fraunhofer-Projektzentrum Wolfsburg
- Fraunhofer-Institut für Werkzeugmaschinen und Umformtechnik (IWU)

Wolfenbüttel

- Ostfalia Hochschule für angewandte Wissenschaften, Campus Wolfenbüttel
- Lessing-Akademie e. V. Wolfenbüttel

City of Salzgitter

- Ostfalia Hochschule für angewandte Wissenschaften, Campus Salzgitter

Goslar

- Technische Universität Clausthal
- Fraunhofer-Institut für Nachrichtentechnik, Heinrich-Hertz-Institut (HH)



Numerous cultural offerings, where everyone gets their money's worth, create a lively atmosphere.



Die Region

Braunschweig-Wolfsburg

In addition to its economic and scientific importance, the Braunschweig-Wolfsburg region offers a high quality of life.

The Harz National Park and the Elm-Lappwald Nature Park as well as the rural moor and heathland areas around Peine and Gifhorn invite you to relax.

Information at: die-region.de



metropol region.de



The **Hannover-Brunswick-Göttingen-Wolfsburg metropolitan region** stretches from the southern heath to the Hessian state border, from the Weser river to the Harz mountains. **Networking, developing, enabling** is the motto here, which is put into practice through the exchange among people and companies, science and municipalities with their skills and knowledge, their competences and ideas.

Information at: metropolregion.de



Braunschweig-Wolfsburg economic region

- Area:** 3 independent cities / 5 rural districts
- Surface area:** > 5,000 km²
- Inhabitants:** approx. 1.1 million
- employee subject to social insurance payment:** 96,405 €
- Purchasing power index:** 105.5
- Patent applications per 100,000 adults p.a.:** 179.4
- Employees in research & development:** approx 36,000
- Students Colleges/Universities:** approx 40,000

Information at: allianz-fuer-die-region.de

Our federal state



Motorway connections
from Scandinavia to Italy,
from Amsterdam / Paris /
London to Moscow

Maritime infrastructure
with 9 seaports along
the 300 km long
North Sea coast

Central location
in the centre of
Europe

**Home of the world's
largest industrial
trade fair:**
Hannover Messe

Hanover Airport
moves over 6 million
passengers per year
- 24 hours a day

Land Niedersachsen

- Inhabitants: 8 million
- Surface area: 50,000 km²
- Gross value added: 267.4 Mio
- Waterway: 1,100 km
- Motorway: 1,400 km
- Rail network: 4,100 km
- Universities, universities of applied sciences, vocational academies: 36
- Passengers at Hanover Airport (2019): 6.3 Mio

(Source: Invest in Lower Saxony)



Information at: nds.de

Companies based in Lower Saxony with a global reputation:



Imprint

Publisher / Editorial office:
Landkreis Gifhorn Innovation & Service GmbH

Design:
Pura-Design
Maren Steffen-Memler

Photography:
Adobe Stock (7, 12, 23, 29, 33), Alexander Zaborowski (3, 6, 9, 13, 14, 15, 16, 17, 22), Anja Selzer-Gassmann (1, 18, 21), ASAP Gruppe (4), Bertrandt AG (5), Braunschweig Stadtmarketing GmbH, Christian Bierwagen (32), Christian Bierwagen (31), EGGGER Kunststoffe GmbH & Co KG (11), Farmlnn - Gutshof & Eventlocation (19), Hammersteinpark (10), Landkreis Gifhorn (2), Morada Hotel (20), Regionalverband Großraum Braunschweig (8), Salzgitter AG (24, 25), WMG – Wolfsburg (26), WMG – Wolfsburg, Sahnfoto (27, 28), WMG – Wolfsburg, Tim Schulze (30)

Status: October 2024

For reasons of better comprehensibility and readability, the use of gender-specific language forms (m/f/d) has been omitted. Of course, all people are addressed equally. We ask for your understanding.



Contact

Wirtschaftsförderung
Landkreis Gifhorn Innovation & Service GmbH

Schlossplatz 1
38518 Gifhorn

info@wf-gifhorn.de

wirtschaftsforderung-gifhorn.de